



ANNUAL REPORT

Congress - 2021



Confédération Européenne de Pétanque
Boulodrome national FLBP, 184, chemin Rouge, L-4480 Belvaux, LUXEMBOURG

www.cep-petanque.com



CONGRESS 2021

TABLE OF CONTENTS

President's Report	3
Secretary General's Report	6
Financial Report	
Audit	8
Treasurer	10
Budget 2022	14
Membership	
Survey	16
Transfers	18
Pétanque & Disability	20
Championships	
2021	24
2022	26

PRESIDENT'S REPORT

Mike Pegg
England



Dear friends,

To begin, I wish to express my deepest thoughts to all the members of our sport who are suffering due to the pandemic and to those of you that have lost a loved one, I send you my sincere condolences.

We are living in a time when humanity is making an unprecedented effort to limit the effects of Covid-19 but there is no denying that the first quarter of 2021 has been just as challenging for us all as last year was.

At the start of 2020 all was going well, we held our Spring meeting in Luxembourg, we were arranging a Coaching for Coaches course , an umpiring seminar in the first quarter and looking forward to our championships – and then the virus came, and the world changed.

The only playing highlight to report on for the year was the virtual precision shooting challenge on Facebook. It was a small oasis in what was to become a desert for our sport!

Thank you to our hosts, the Dansk Pétanque Forbund and in particular Jørgen Sloth, who organised the games - we hope you all enjoyed the challenge!

Congratulations go to our winners and to all of the participants in our first ever “on-line” precision shooting challenge.

*Euro-Pétanque (Corona) Precision Shooting
Winners - Germany 1*

*Euro-Pétanque (Corona) Precision Shooting “Nations”
Winners - Netherlands 1*

Some organisations may boast they have been using virtual meetings for years. However, for the rest of us, until 2020, if we had attended a virtual meeting it might have involved a few calls with family members over FaceTime, the occasional webinar or long teleconferences with no video at all.

I think it is fair to say the vast majority of us were oblivious to the benefits of a virtual meeting until it was thrust upon us by necessity and more or less overnight.

The move to virtual meetings as a norm is an exciting development, they provide a much needed tool to help work life balance, which for the volunteer is especially important. However, whilst a virtual meeting may have a number of benefits I don't think they will replace those which a face to face meeting allow, such as the dynamic interaction between participants.

But virtual meetings certainly have changed the way we work, for those decisions that benefit from a debate, we no longer wait until our next face to face meeting or rely on a lengthy string of emails, instead we simply arrange a virtual meeting at a time that suits everyone saving a considerable amount of time and money which would normally be spent on flights and accommodation.



I know some of you were concerned with the timing between the new rules for our sport being issued and their coming into effect, as it gave you very little time to translate them into your own language, to provide new rule books for your members and to update your umpires too!

I have written to Claude Azema on this matter suggesting the creation of a small team responsible for reviewing the rules, to consider feedback from umpires, players, federations etc and then every two years report to the FIPJP.

For our part we shall arrange a European umpiring seminar every two years to review the rules and discuss their application. Any proposals coming from our seminar will be submitted to the FIPJP for consideration.

I would hope that a more structured approach for reviewing the rules will provide ample time for the FIPJP to agree and announce modifications, preventing this kind of "publish in haste" scenario from reoccurring.

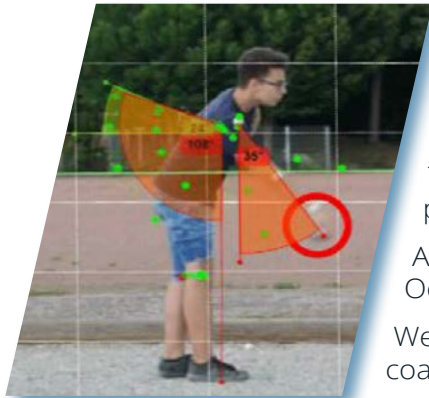
With no championships to run this past year, we have used the rare 'free time' to thoroughly review our statutes and regulations.

Many of the changes we are asking you to adopt at this congress are cosmetic, others are improvements to terminology or the translation from English to French.

In our opinion both documents are now much clearer and easier to understand and I'm confident they are robust and shall serve our Confederation well.

In the past weeks our Coaching Commission held a video seminar which included the presentation of the "Kinovea" video player.





Providing a set of tools to capture, slow down, study, compare, annotate and measure technical performances, this free and open source video player makes movement analysis much easier for your coaches.

A follow up seminar is scheduled to take place on April 28, giving your coaches the opportunity to talk about their own experiences, report back on assignments and, of course to ask questions of our team.

The CEP believes pétanque is a naturally socially distanced sport that is safe to play, it is important for people's physical and mental health and provide all ages the opportunity to exercise with friends or relatives.

Although we have been forced to postpone our Junior and Espoirs Triples Championship until the second week of October 2021, the future is starting to look bright as vaccines are gradually being rolled out across Europe.

We know that postponing a championship is incredibly disappointing and frustrating news for all those players, coaches, venues and officials involved, but our ambition is keeping the disruption to our calendar as short as possible.

Working with our Medical Commission and using the examples of other European Sports organisations, we have prepared a number of protocols to enable a safe return to holding and participating in our championships once travel restrictions are lifted.

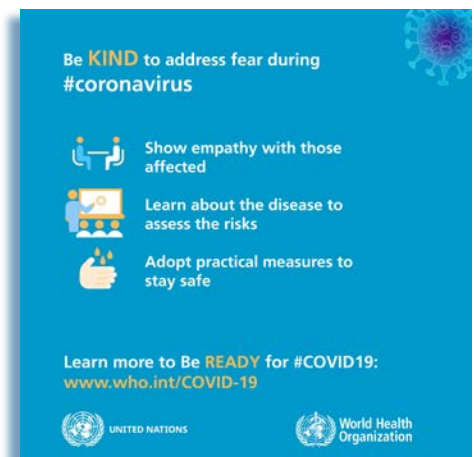
These protocols are very stringent because they are based on the current situation, but as things improve across Europe we hope to be able to relax many of the restrictions. However, it is likely that proof of either having a negative test for Covid-19 or of having a vaccine may become the 'new normal'.

We believe it is likely that everyone will be required to stay in the official accommodation - no choosing a place of your own - to minimise the possibility of contracting the virus. This being the case we shall remove the registration fee from all our championships with immediate affect and for the foreseeable future.

It will be no easy task for our sport to return to "normal" after such a significant and lengthy disruption, but with determination and collaboration I remain confident that we will eventually come back stronger than ever. Meanwhile, we are doing everything we can to ensure the experience you and your teams expect and deserve from the CEP at our championships is provided in a safe environment.

I take this opportunity to thank my fellow Directors for their efforts and counsel over the past year, and to all of you for your continued support and trust, I look forward to welcoming you all at our championships soon.

Mike Pegg
MIKE PEGG
President



SECRETARY GENERAL'S REPORT

Signe Hovind
Norway



Mr. President, Directors, Member Federations

First of all, I would like to join our President's concern for all our members through a difficult and challenging year. The pandemic has had and still has a huge intervention in our daily lives throughout Europe. But hopefully during 2021 we will be able to return to a fairly normal everyday life.

Many people accuse FaceBook and other social medias of taking up too much space/time in our lives, but this last year, thanks to FaceBook, pétanque-friends from all over the world have shared both good, old memories and other experiences with us, - just to give us a reason to smile/laugh or just saying hi. Just what we needed in this "Annus horribilis".

Most of our Member Federations had to cancel all their tournaments in 2020, only a few Federations have arranged tournaments "almost" as usual. All over Europe we have been missing the daily contact with our pétanque-friends, missing having a good time together, giving each other a hug or a good handshake. In times like this you really experience that pétanque not only being a sport, but a lifestyle!

Last year, we started out as we use to, collecting information from the Member Federations through the Members Survey. We could see an increase in membership in both the group of Veterans and Adults. Unfortunately, we had a decline among our youngest members, so we definitely have a job to do to ensure regrowth.

Even the Spring Meeting could be arranged as usual - around the table in Luxembourg. The Directors were busy planning for the season to come, included having courses in Luxembourg, arranging for the European Championships and finally, the biggest EuroCup for Clubs weekend ever, with participants from 32 countries. But all of that was not meant to be.

The CEP Congress in June was a digital happening for the first time, and I guess some of you were completely satisfied with not having to travel to Luxembourg just for a weekend. And of course, it is a much cheaper solution to everyone. But I still believe that meeting face to face should be strived for, all the small talk during the breaks or in the evenings around the dinner table or at the bar - that's when many of the good ideas are born and good friendships are formed.

The Congress went on smoothly thanks to good technical support from Jürgen Hatzenbühler, member of the German Pétanque Federation. 31 Member Federations attended the Congress, including voting during the election of six Directors to the Board. Mike Pegg, Tony Smith, Signe Hovind and Henrik Toft were re-elected, while Riccardo Capaccioni, Italy and Sjoerd Pieterse, Netherlands, were elected new Directors.

Fabio Ballauco, Italy and Bruno Fernandez, Slovakia had come the end of their mandate, and Mike Pegg expressed great gratitude to them for their long service and their role in building the CEP into the strong organisation it is today.

Even in a year without any tournaments, the Directors have been quite busy answering member inquiries and following up on various questions, discussions within the Board, continuous work in relation to always improve on regulations and routines to make the CEP as updated and healthy organisation as possible.

With all our efforts, but also depending on open borders in Europe, we really hope to be able to welcome you all to our championships later this year, even if that means we have to wear facemasks and take all necessary precautions.



Signe Hovind
SIGNÉ HOVIND
Secretary General

AUDITORS REPORT

Colin Stewart
Scotland



Kerstin Hjelm
Sweden



Ioannis Giakoumis
Greece



REPORT ON THE FINANCIAL STATEMENTS

We have audited the balance sheets of the Confédération Européenne de Pétanque and the related statements of income, retained earnings, and cash flows for the year end 31 December 2020, and the related notes to the financial statements.

TREASURER'S RESPONSIBILITY FOR THE FINANCIAL STATEMENTS

The CEP Treasurer is responsible for the preparation and fair presentation of these financial statements in accordance with accounting principles generally accepted in Europe; this includes the design, implementation, and maintenance of internal control relevant to the preparation and fair presentation of consolidated financial statements that are free from material misstatement, whether due to fraud or error.

AUDITOR'S RESPONSIBILITY

Our responsibility is to express an opinion on these financial statements based on our audits. We conducted our audits in accordance with auditing standards generally accepted in Europe. Those standards require that we plan and perform the audit to obtain reasonable assurance about whether the financial statements are free of material misstatement.

An audit involves performing procedures to obtain audit evidence about the amounts and the disclosures in the financial statements.

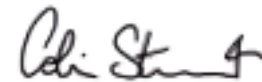
The procedures selected depend on the auditor's judgement, including the assessment of the risks of material misstatement of the financial statements, whether due to fraud or error. In making those risk assessments, the auditor considers internal control relevant to the entity's preparation and fair presentation of the financial statements in order to design audit procedures that are appropriate in the circumstances, but not for the purpose of expressing an opinion on the effectiveness of the entity's internal control. Accordingly, we express no such opinion.

An audit also includes evaluating the appropriateness of accounting policies used and the reasonableness of significant accounting estimates made by the CEP Board, as well as evaluating the overall presentation of the financial statement.

We believe that the audit evidence we have obtained is sufficient and appropriate to provide a reasonable basis for our audit opinion.

OPINION

In our opinion, the financial statements referred to previously present fairly, in all material respects, the financial position of the Confédération Européenne de Pétanque and the results of its operations and its cash flows for the year ending 31 December 2020 in conformity with accounting principles generally accepted in Europe.



COLIN STEWART
Chair - Audit Committee

TREASURER'S REPORT

Tony Smith
Wales



My sincere thanks again to the Audit Committee: **Colin Stewart** (Scotland), **Kerstin Hjelm** (Sweden) and **Ioannis Giakoumis** (Greece) for their diligence in auditing our 2020 accounts.

We could not have predicted the pandemic's ongoing effects. However, we have to remain positive for the year ahead. We are continually monitoring the situation and endeavouring to continue developing our sport for which the CEP is renowned.

The Income and Expenditure for the year ending December 31st, 2020, are presented as follows:

INCOME

The majority of our programmed activities in 2020 did not occur; therefore, our primary income source continued to be Membership with a small income from Marketing and Membership Transfers.

The grant available through our covenant with the Luxembourg Ministry of Sport, provides a maximum of 7,500 euros per year, but this is subject to the activities we host at the FLBP's National Boulodrome in Belvaux, Luxembourg. We could only arrange the Board of Directors' spring meeting, which resulted in us submitting a reduced application, we only received 1,875 euros for 2020.

We continue to invoice you for both the CEP and FIPJP membership fees. My thanks go to you for the continued prompt payment of these invoices.

EXPENDITURE

Our reduced activities in 2020 have had a direct effect on our expenditure for the year.

The main area of expenditure was Administration, including the repayment of Congress and Coaching registration fees. For the CEP to continue developing our sport and maintaining communication between the Board of Directors and our Members, we purchased a Zoom video conferencing licence, which has been crucial for us to work effectively; this will be an ongoing cost in the foreseeable future.

Members of the Executive Committee purchased airline tickets to ensure that events run effectively; these have been converted to travel vouchers for 2021.

STATEMENT OF FINANCIAL POSITION

Our financial position remains strong, with Net Assets increasing from 42,500 euros in 2019 to 62,700 euros directly due to the pandemic. Due to some issues, several of our members still have their membership fees outstanding; we continually monitor the situation with them.

A small number of membership licence transfers took place in 2020; it is anticipated that this level of demand for the service will remain for the immediate future.

Any surplus money is always invested in our sport to support our training programme and future development plans. As a direct effect of the pandemic, we have now reached our desired level of reserves for the first time, putting us in the driving seat to deliver our future objectives.



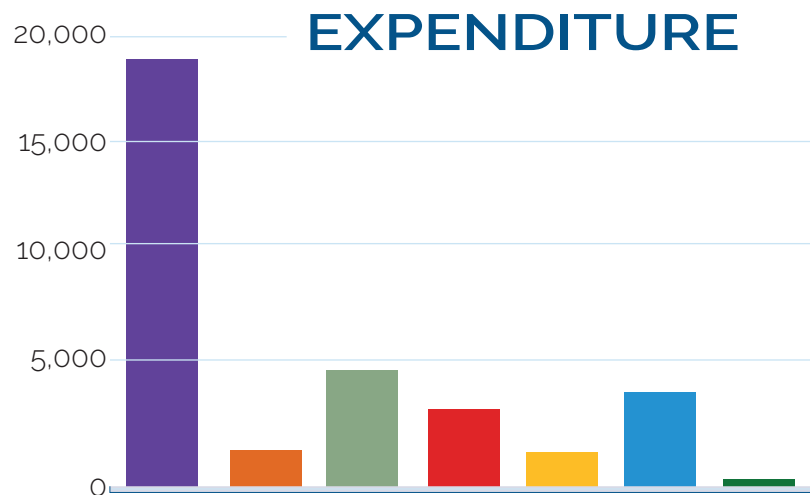
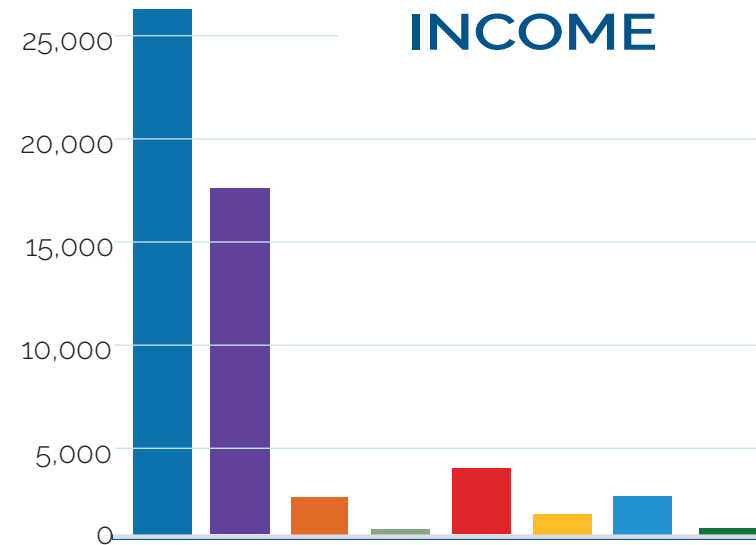
TONY SMITH
Treasurer

www.cep-petanque.com

now includes a “Medallists” page listing all **Gold**, **Silver** and **Bronze** championship medallist

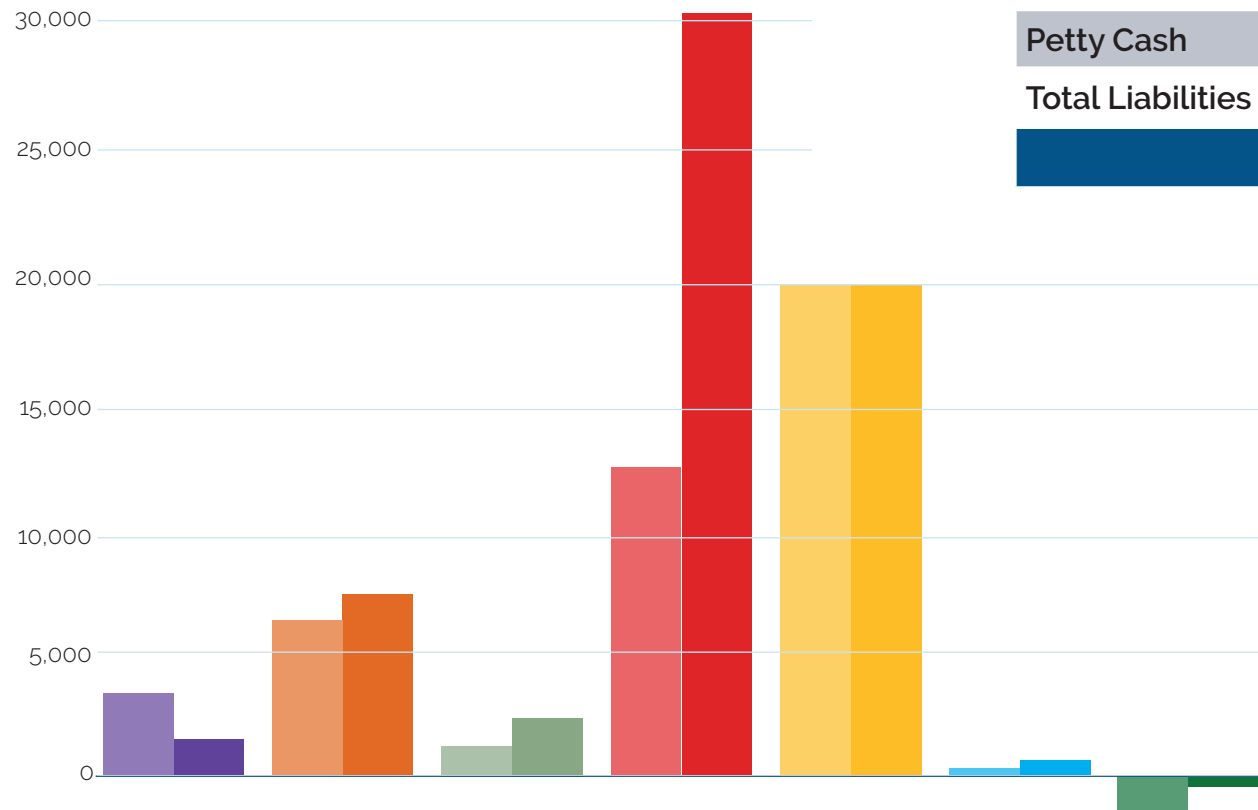
Membership (CEP)	25,500
Membership (FIPJP)	16,800
Congress Administration	1,809
Transfers - Membership/Licence	270
Training - Coaching	3,250
Marketing	997
Luxembourg Ministry of Sports	1,875
Refunds/Overpayments ¹	311
TOTAL INCOME €	50,812

¹ Credit Card refund / Refund of Membership Overpayment.



Membership (FIPJP)	17,150
Congress Administration (Refund)	1,551
Administration (Meetings)	4,745
Administration (Office costs & Banking)	3,202
Championship / European Cup for Clubs	1,518
Coaching (Administration & Refund)	3,874
Marketing	53
TOTAL EXPENDITURE €	32,093

BALANCE SHEET



	2019	2020
Fixed Assets (B/F & Purchased)	3,430	1,516
Assets & Stock	6,409	7,487
Debtors	1,250	2,420
Current Bank account	12,731	31,437
Reserve Bank account	20,237	20,220
Petty Cash	34	64
Total Liabilities	- 1,500	- 428
NET ASSETS €	42,592	62,715

2022 BUDGET

The consolidated provisional budget for 2022 is presented here. There have been significant changes to that published in last year's Annual Report.

The Board of Directors' priority is to maintain a stable financial position, especially in these difficult times. We have carried out a full review of the membership fee and have agreed there is no need for an increase, our next review takes place in 2023.

With immediate effect the Board of Directors has decided to stop the competition registration fee. However, the registration fee for the EuroCup will continue to be collected as the competition is self-funding. The membership licence transfer fee will continue to support our income, it is anticipated to be low, as previously discussed.

As part of our continuous training programme, two training courses (Coaching and Umpiring) have been included in the budget for 2022, subsidised by the CEP.

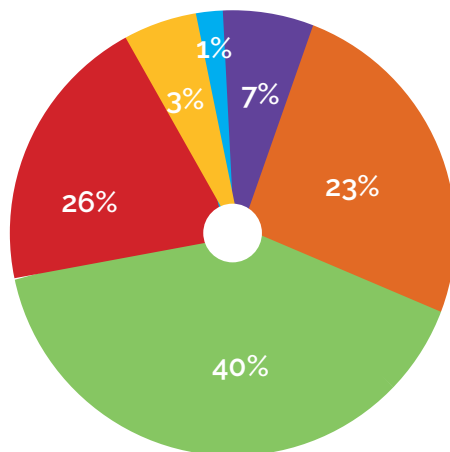
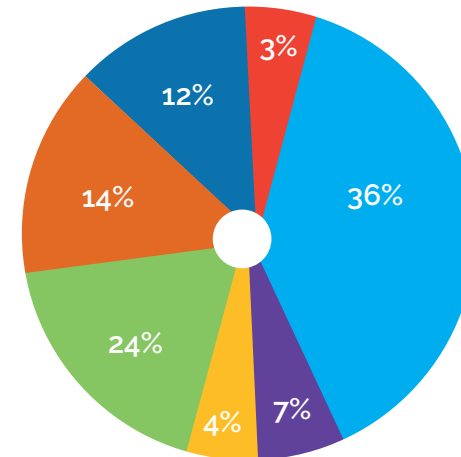
Marketing income for 2022 is based on the sale of the remaining precision shooting templates. Additional funds have been allocated to the Disability Commission to continue developing this important area of our sport.

The Luxembourg Ministry of Sport's annual covenant payment depends on our use of the facilities at the Luxembourg National Boulodrome. Hopefully, by 2022, we can once again begin to utilise these facilities.



Income

Membership	25,960
Congress Administration	5,000
Transfers Membership / Licence	3,000
European Cup for Clubs	17,350
Training Programme (Coaching, Umpiring)	10,000
Training Subsidy	9,000
Marketing	2,000
TOTAL INCOME €	72,310

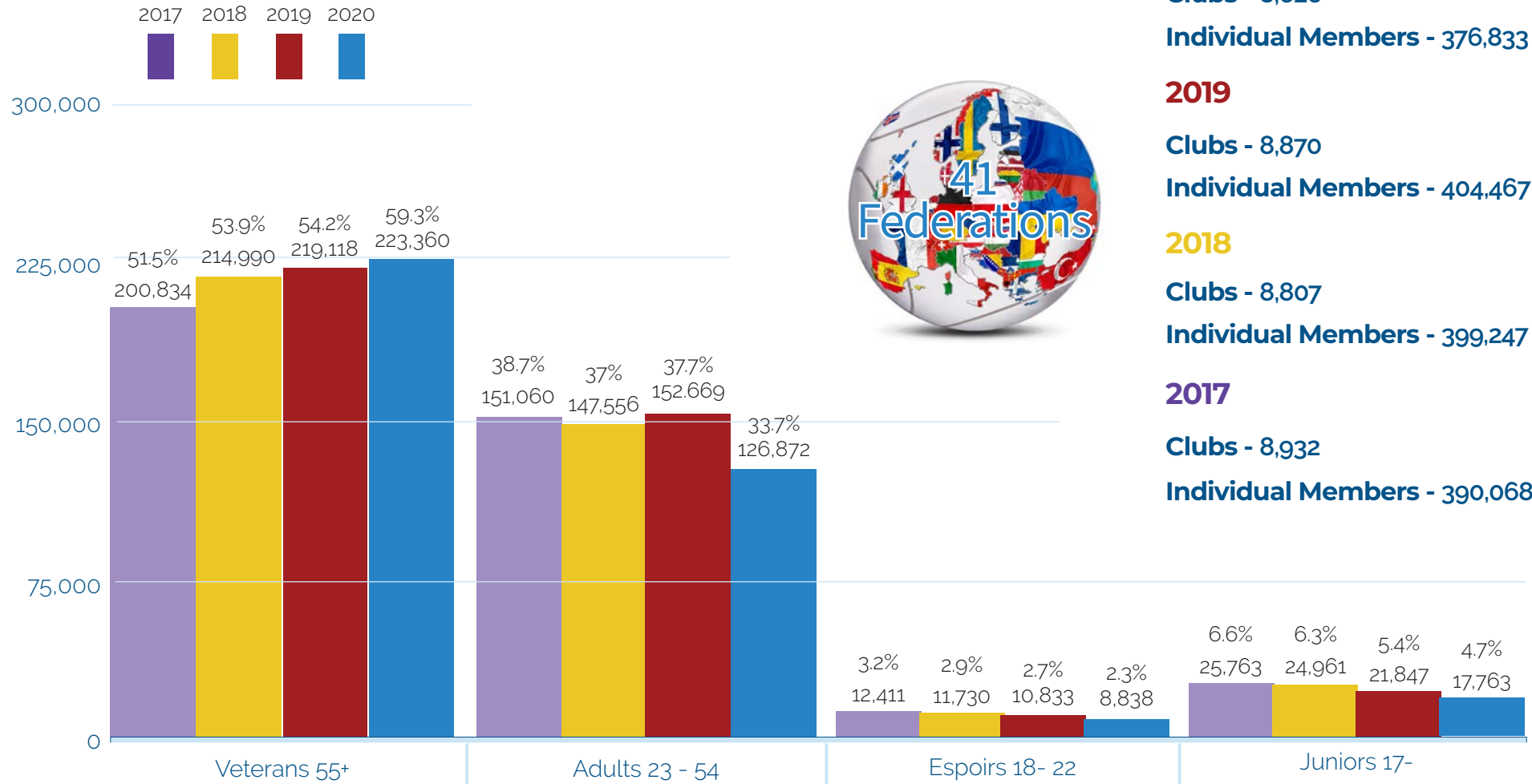


Expenditure

Administration (Inc, Office, Tech, Bank etc)	4,870
Meetings (Directors, Congress, Travel etc.)	16,600
Championships / European Cup for Clubs	28,840
Training (Coaching & Umpiring)	19,000
Disability & Pétanque	2,000
Marketing	1,000
TOTAL EXPENDITURE €	72,310

Membership / Licence Survey

4 years



2020

Clubs - 8,626
Individual Members - 376,833

2019

Clubs - 8,870
Individual Members - 404,467

2018

Clubs - 8,807
Individual Members - 399,247

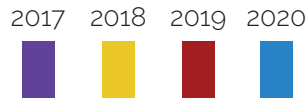
2017

Clubs - 8,932
Individual Members - 390,068



Category (age) Breakdown

4 years



2020

Total 376,833

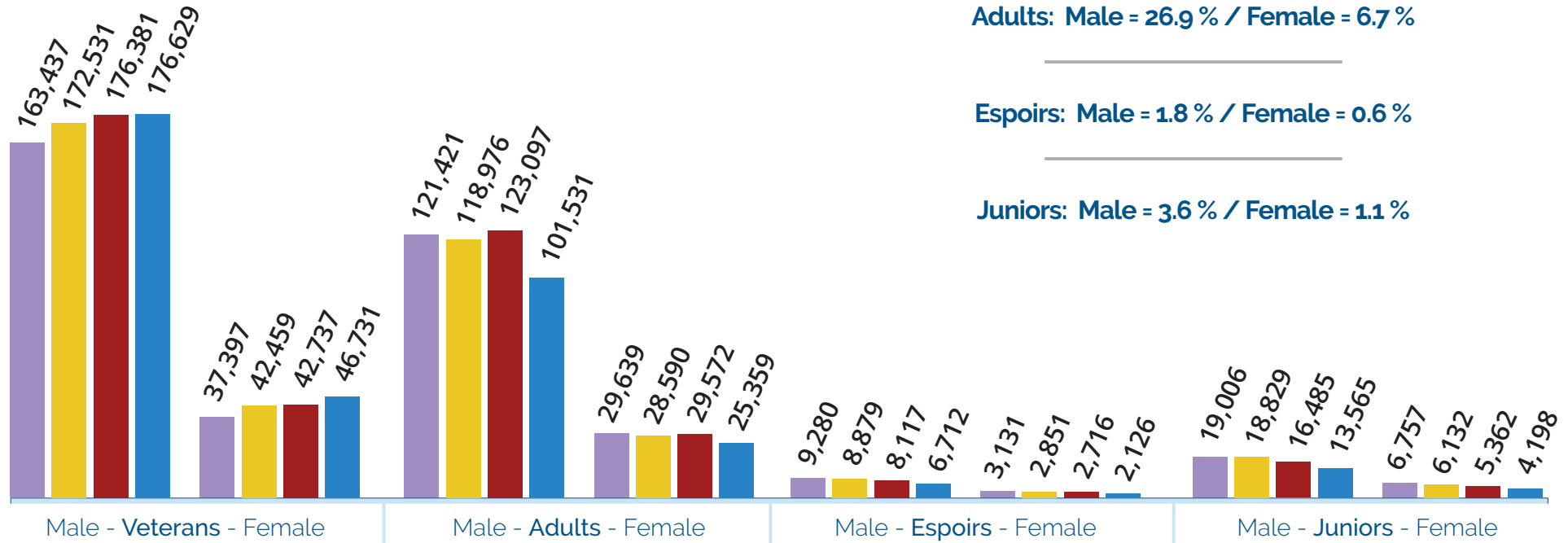
Male = 79.2 % / Female = 20.8 %

Veterans: Male = 46.9 % / Female = 12.4 %

Adults: Male = 26.9 % / Female = 6.7 %

Espoirs: Male = 1.8 % / Female = 0.6 %

Juniors: Male = 3.6 % / Female = 1.1 %



MEMBERSHIP/LICENCE TRANSFERS

Jean-Luc Melleker
Belgium



On May 7 2020 we launched the new Licence/Membership Transfer protocol and to date we have processed 50 transfers which is surprising given the pandemic restrictions.

Just recently, we have conducted a review of the process and paperwork, resulting in a few small changes.

The application form is now available to download from our website and can be completed by the player, their club and federation prior to contacting us.

The completed form should be forwarded to transfer@cep-petanque.com

We will check all the details provided, ensuring everything is in order, and apply a unique reference number.

The players new federation is provided with a copy of the transfer form and our invoice.

On receipt of the payment, we issue the transfer certificate which allows the players new federation to issue their licence.

Other changes we have made to the transfer process is to simplify the form and transfer certificate.

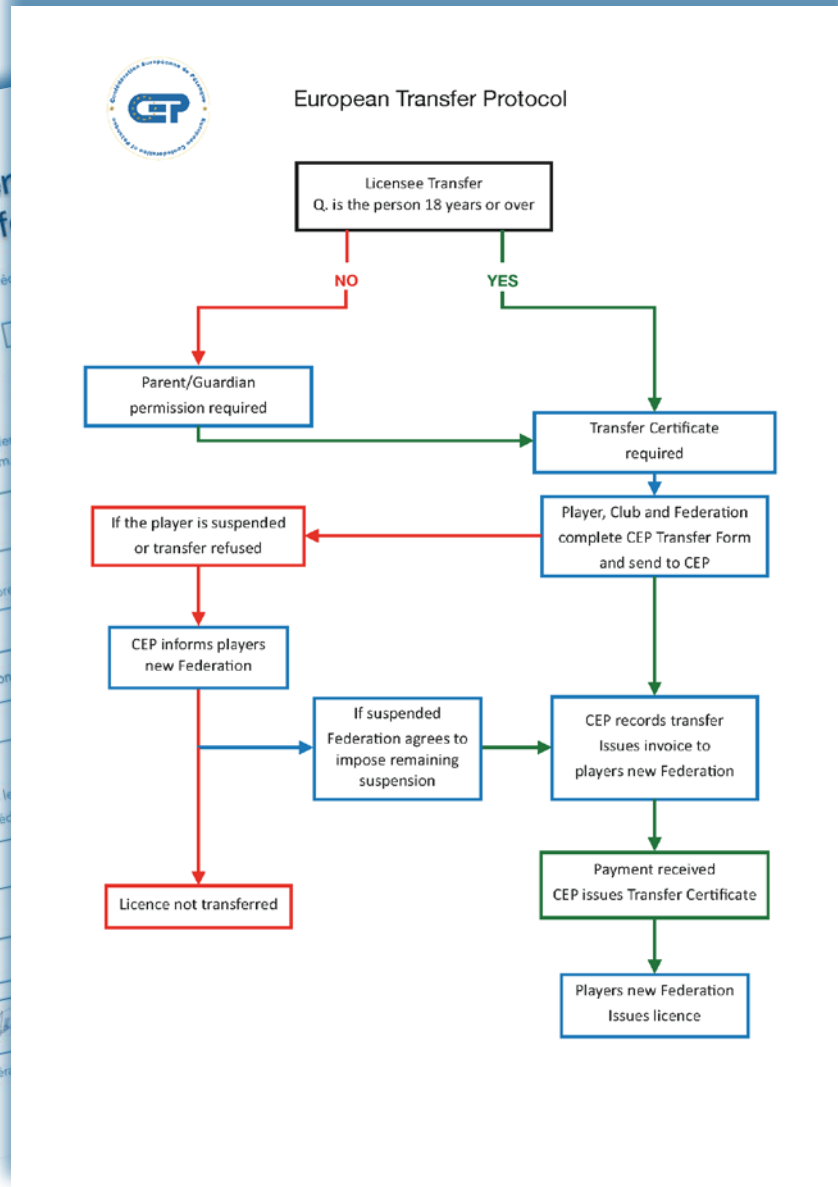
We continue to take an active role in the transfer of players between federations, resolving issues and helping all concerned to complete the process as quickly as possible.

The administration fee of €30 (free for under 18's) is charged for every transfer, with the monies received being invested back into our sport.

The Transfer forms, protocol and regulations are available either by email from our Transfer Secretary, Jean-Luc Melleker at - transfer@cep-petanque.com or by download from our website www.cep-petanque.com

Please note, a transfer between federations is only valid with a CEP issued, signed and numbered "European Transfer Certificate".

JEAN-LUC MELLEKER
Transfer Secretary



PÉTANQUE & DISABILITY

Joseph Cantarelli
France



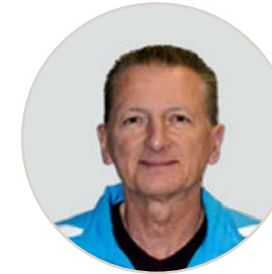
Sjoerd Pieterse
Netherlands



Michael Dörhöfer
Germany



Jean Pierre Iannarelli
France



As is the case for everyone, the work of the Pétanque & Disability Commission has been greatly hindered by the Covid pandemic. The Commission was set up by the Directors to enable more disabled people to enjoy our sport, which is well suited for this purpose. Our first objective is to create a European Pétanque event especially for people with disabilities.

As a first step, our commission has drawn up a questionnaire and sent it to all the member federations, in order to get an idea of the state of affairs in the different countries: to what extent are federations working on organising special activities for people with disabilities, how are they organising it, what challenges do they encounter, and also: what do they expect from our commission?

Twenty-five federations responded to this survey. The commission has drawn up a summary of the answers received which follows this report.

It has become clear that there are big differences between federations in the extent to which they are working on this issue and manage to effectively involve people with disabilities in pétanque activities, as well as in the way this is handled.

Based on these results, the commission intends to engage with national and international disability sport organisations to explore what we need to consider when organising a European pétanque event for people with disabilities.

The commission also plans to go to a national event in France called the "National Handi Pétanque de Gy" in Haute Saône - provided it can take place this year. We will be able to benefit from their two year experience organising this event and to exchange experiences on the spot.

There are still many questions to be answered. There are many different types of disability, each of which has its own limitations and requirements.

We will have to make choices: not everything can be done at the same time, and not everything is realistic. The very different situations in the countries from which the participants will come must also be taken into account.

The Commission had hoped to be able to present various ideas and options at this Congress, but their preparation, and especially consultation with other organisations, has been (and continues to be) seriously hampered by the pandemic.

Our intention now is to use the year 2021 for the aforementioned consultations and the elaboration of options in order to be able to present a plan in the next Congress.

In the shorter term, any organisation in the field of disability is almost impossible in this period of health crisis because people with disabilities are considered a public at risk.

SURVEY REPORT

At the end of July, our Pétanque & Disability Commission launched a survey to assess the situation in the various member federations with regard to the sports offered for people with disabilities.

We received a total of 25 responses from 23 countries. The survey was completed twice by both Norway and Belgium. For Belgium, we have processed the answers from the Walloon and Flemish regions separately. However, for Norway, we have based the report on the answers we received via the email address of the Norwegian Federation.

The questions related to the activities within the federations specifically for people with disabilities. We also asked about your cooperation with federations for disabled sports, about the conditions for membership of people with disabilities, about challenges experienced by each federation, and what you expect from our Pétanque & Disability Commission.

A small number of federations responded to our survey with comments such as: “No distinction is made between people with or without a disability. There is therefore no need for a specific ‘class’ for the disabled” and “The rules make it possible for everyone to participate as is. People with disabilities are therefore involved in regular matches”.

Below we have summarised the results of the survey on which our commission will base their plans for the next stage in our project to ultimately bring about a European tournament for people with disabilities.



Specific activities within the federations for people with disabilities

- Fourteen of the 24 federations indicate that specific activities for people with disabilities are organised within their organisation. Such activities are mostly organised by one or more clubs. Six federations also undertake such activities at a national level.
- Only France and Germany have a separate commission for people with disabilities.
- Some federations that do not (yet) have special activities for people with disabilities indicate that they want to develop this.
- There are only a few federations who organise tournaments exclusively for people with disabilities (at national level only France and Russia). In most cases, tournaments for players with a disability are 'mixed' tournaments, where teams consist of players with and players without disabilities.
- Some federations explicitly state that disabled people may participate in all tournaments.
- Some federations report that they make special provisions for disabled people: adapted rules, requiring organisers to ensure that terrains are accessible for wheelchair users, adapted materials, etc.
- Seven federations have a partnership with a national federation for disabled sports.

Membership

- Most federations have members/players with disabilities. It is often not known how many, because it is not registered.
- Almost all federations require members with a disability to pay for their membership, regardless of whether they are also affiliated with a disability association. In the latter case, there are four federations that do not have an obligation to have a license with the federation.

Challenges

- Guidance, care and safety of this category of players. The rules are sometimes an obstacle for players with a mental disability.
- Accessibility for less mobile participants.
- Making contact with people with disabilities who may be interested in participating in pétanque. Many are not so much interested in this specific sport but more in any kind of event that is organised especially for them. After a possible tournament, their interest is gone.

- Pétanque is not well known, especially as a sport which is very suitable for people with disabilities.
- Disabled people often prefer not to draw attention to their disability.
- Lack of resources and volunteers to organise a separate sport specifically for people with disabilities. Usually no government subsidy for this.
- Lack of knowledge / expertise.
- There are countries where the Disabled Sports Federation has a monopoly to organise events for people with disabilities.
- Pétanque is not officially recognised as a sport in some countries.

Expectations and suggestions

- There is a need for suggestions / instructions and support, such as guidelines for different types of events, suggestions on how to get more people involved in our sport and how to get in touch with disability organisations nationally. There is also interest in the exchange of best practices for ways of involving people with different disabilities.
- Develop products and tools, such as standards for competitions in which both people with and people without disabilities participate, adapted rules for competitions for people with disabilities, a format that the federations can further define themselves, and a list of actions that could / should be taken.
- A document is also envisaged that could be used across Europe to promote pétanque for people with disabilities. Possibly send such a document to organisations for people with disabilities.
- Organisation of events in Europe: a major event exclusively for people with disabilities, or perhaps for teams with and without disabilities. Possible development of a European pétanque competition for people with disabilities.
- Representation and collaboration: Connect with International Disabled Sports Federations to motivate our National Disabled Sports Federations to participate. Gather contact information from the disabled sports federations in all countries and message them to contact the National pétanque Federation to work together towards European championships. Representation to government agencies. Designate contacts within the CEP.



Championships 2021



Albertville, France - world-famous for having hosted the opening and closing ceremonies of the 16th Winter Olympic Games in 1992, will host two European Championships in 2021, the:

6th European Veteran's Triples: 19 - 21 September and the

7th European Men's Triples: 23 - 26 September.



Situated on the Costa Maresme in Catalonia, Santa Susanna will host the:


10th European Espoirs Triples - Men & Women and the

12th European Juniors - Boys & Girls: 7 - 10 October 2021




and to complete the tournaments for 2021 the 23rd European Cup for Club Teams will be hosted in the Boulodrome de Saint Yrieix in Saint Yrieix-sur-Charente in week 48: 2 - 5 December

23^{ème} Coupe d'Europe des Clubs
du 2 au 5 Décembre 2021




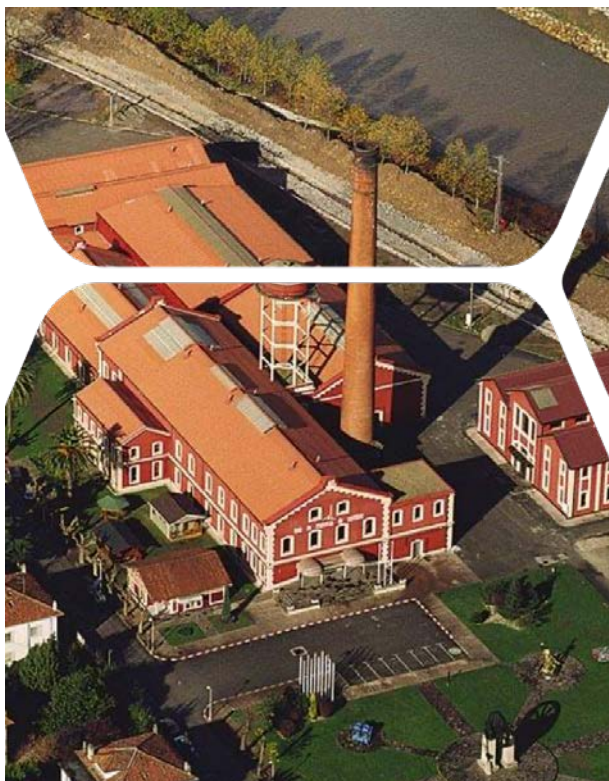
32 équipes
32 pays,
1 Champion !



European Cup for Clubs

Boulodrome de SAINT-YRIEIX
34, Impasse Rouyères
16710 Saint-Yrieix-sur-Charente





The Spanish Pétanque Federation is the host for our
9th European Women's Triples Championship
3 - 5 June 2022

The event will be hosted at the Cantabria Trade Fair Centre (feria de muestras de Torrelavega) which is roughly 8 kilometres from the Cantabrian Coast and 27.5 kilometres from the capital of Santander.



At the end of September, we return to Spain, but this time Almerimar for our

11th European Espoirs Triples - Men & Women
and the

13th European Juniors - Boys & Girls:

29 September - 02 October 2022

Championships 2022





Celebrating their 50th Anniversary, the NJBB, with their partners, Team TOC will host the
3rd European Singles, Men & Women and our
1st European Doubles, Men - Women and Mixed
from the 13 - 17 July 2022 in 's-Hertogenbosch, the capital of the Province of North Brabant.



To complete the season our
24th European Cup for Club Teams will be taking place in the Boulodrome de Saint Yrieix in Saint Yrieix-sur-Charente in week 48: 1- 4 December



Confédération Européenne de Pétanque
Boulodrome national FLBP, 184, chemin Rouge, L-4480 Belvaux, LUXEMBOURG
www.cep-petanque.com



president@cep-petanque.com



secretary@cep-petanque.com



www.cep-petanque.com